

ADSL Router Installation Guide

1	<i>Panel Illustration</i>	2
1.1	Single-Port ADSL Router Front Panel Indicators and Descriptions.....	2
1.2	Four-Port ADSL Router Front Panel Indicators and Descriptions.....	3
1.3	Rear Panel	4
2	<i>Package Contains</i>	4
3	<i>Hardware Installation</i>	4
4	<i>Driver Installation</i>	5

1. Panel Illustration

1.1 Single-Port ADSL Router Front Panel Indicators and Descriptions

Place the Router in a location that permits an easy view of the LED indicators shown in the front panel.

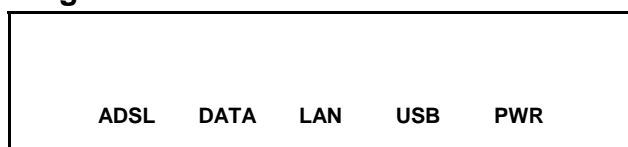
Single-Port ADSL Router



Descriptions of LED status

DATA	When router is transferring data between Internet and router, this LED will be flashing.
ADSL	When connection with Internet (ADSL Connected) is established, this LED will light up. When this LED is flashing: NO ADSL physical connection
LLK	When connection 10/100MB with end user is established, this LED will light up. When router is transferring data between router and end user, this LED will be flashing.
LAC	When 100MB connection to end-user is established, this LED will light up.
USB	When an active USB cable is connected with router, this LED will light up.
PWR	When an active power adapter is connected with router, this LED will light up.

Single-Port ADSL Router

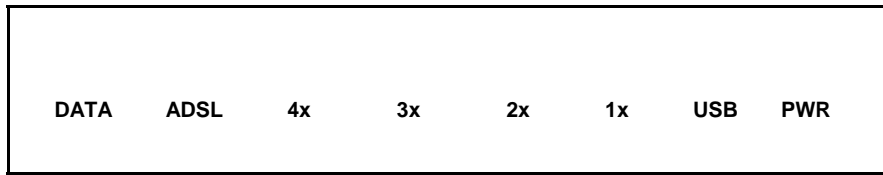


Descriptions of LED status

ADSL	When connection with Internet (ADSL Connected) is established, this LED will light up. When this LED is flashing: NO ADSL physical connection
DATA	When router is transferring data between Internet and router, this LED will be flashing.
LAN	When connection 10/100MB with end user is established, this LED will light up. When router is transferring data between router and end user, this LED will be flashing.
USB	When an active USB cable is connected with router, this LED will light up.
PWR	When an active power adapter is connected with router, this LED will light up.

1.2 Four-Port ADSL Router Front Panel Indicators and Descriptions

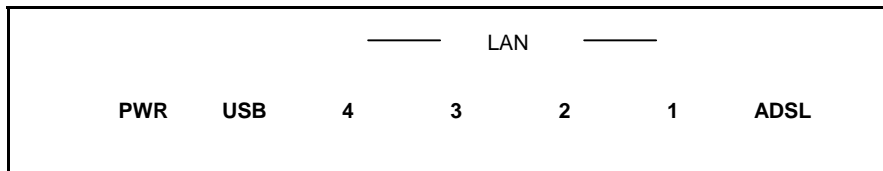
Four-Port ADSL Router



Descriptions of LED status

DATA	When router is transferring data between Internet and router, this LED will be flashing.
ADSL	When connection with Internet (ADSL Connected) is established, this LED will light up. When this LED is flashing: NO ADSL physical connection
4x	When port 4 connection with end user is established, this LED will light up.
3x	When port 3 connection with end user is established, this LED will light up.
2x	When port 2 connection with end user is established, this LED will light up.
1x	When port 1 connection with end user is established, this LED will light up.
USB	When an active USB cable is connected with router, this LED will light up.
PWR	When an active power adapter is connected with router, this LED will light up.

Four-Port ADSL Router



Descriptions of LED status

PWR	When an active power adapter is connected with router, this LED will light up.
USB	When an active USB cable is connected with router, this LED will light up.
4	When port 4 connection with end user is established, this LED will light up.
3	When port 3 connection with end user is established, this LED will light up.
2	When port 2 connection with end user is established, this LED will light up.
1	When port 1 connection with end user is established, this LED will light up.
ADSL	When connection with Internet (ADSL Connected) is established, this LED will light up. When this LED is flashing: NO ADSL physical connection

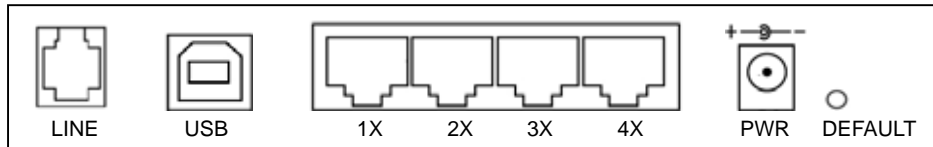
1.3 Rear Panel

The rear panel of the Router provides access to the power adapter cord connection as well as the port connections.

One Port ADSL Router



Four Port ADSL Router



2. Package Contains

Open the shipping carton and carefully remove all items. In addition to this quick installation guide, ascertain that you have:

- One ADSL Router
- One telephone cable (RJ11)
- One network cable (RJ45)
- One USB cable
- One Software CD
- One power adapter

3. Hardware Installation

This section discusses the cable connections you will need to make in order to use the router. When selecting the location for the router, allow room to access the router so that you can see the LED indicators on the front panel.

It may be convenient for you to locate the router near the PC that you intend to use for initial configuration of the router

1) Connect router to **LINE**

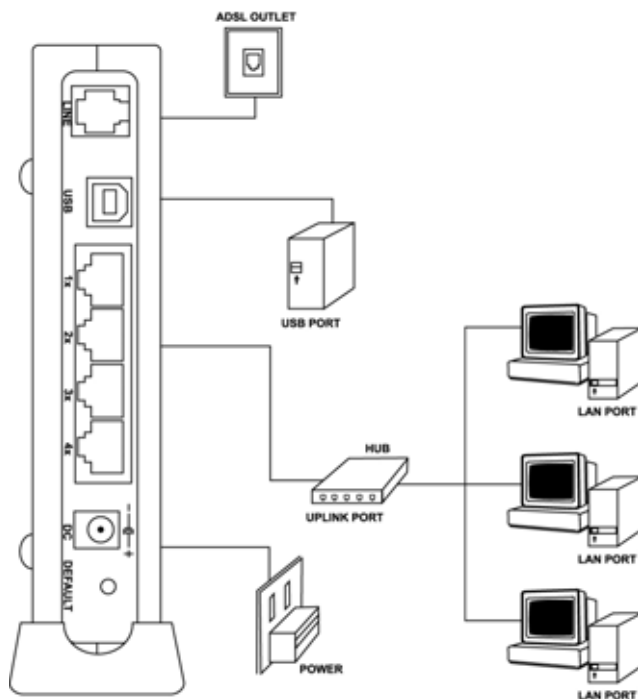
Plug the provided RJ-11 cable into **LINE** port on the back panel of the router and insert the other end into splitter or wall phone jack.

2) Connect router to **LAN**

Plug RJ-45 Ethernet cable into **LAN** port on the back panel of the router and insert the other end of the Ethernet cable on your PC's Ethernet port or switch / hub.

3) Connect router to power adapter

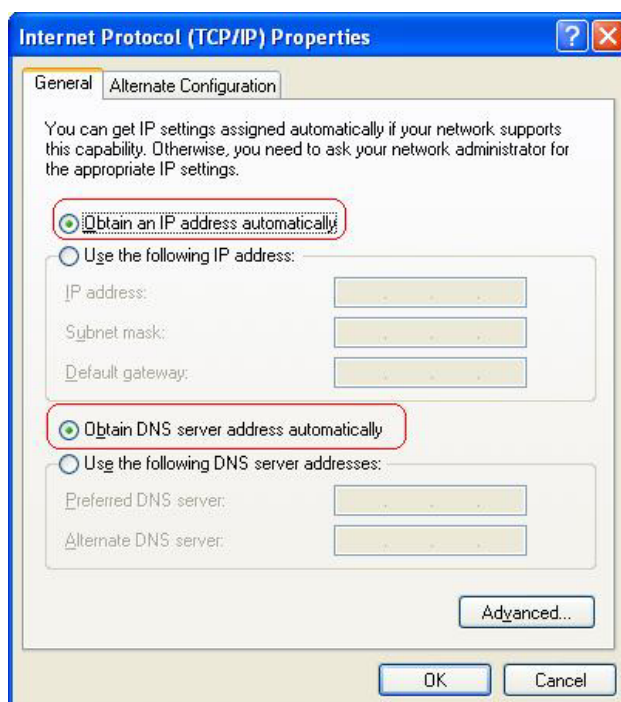
Plug power adapter to **PWR** port on the back panel of the router and the other end to a power outlet.



4. Driver Installation

Before setup ADSL Router, you have to setup network connections.

Click **“Start”** and select **“Control Panel → Network and Internet Connections → Network Connections → Internet Protocol (TCP/IP) Properties → Properties”**, then select **“Obtain an IP address automatically”** and **“Obtain DNS server address automatically”**.



Connect system and ADSL Router with Ethernet cable or USB cable.

- 1) If router is connected through USB cable, detect new hardware window appears, click "**Cancel**". Then insert the CD to install USB driver. If router is connected through Ethernet cable, go to step 2) for the detail setting.

For Windows 98SE and ME:



For Windows 2000 and XP:



Insert the CD, front page of Easy Setup window will appear, if router is connected with USB cable, click “**Install USB Driver**”, software kit will automatically install USB driver.



Install USB Driver: If router is connected through USB cable, click here to install USB driver.

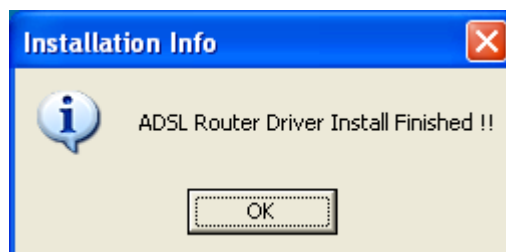
Quick Setup: If router is connected through Ethernet cable or after USB driver is loaded, click here to set the ADSL Router.

User Manual: This CD provides Easy Setup and ADSL Router manual. Easy Setup describes the installation procedures via Quick Setup utility and ADSL Router describes detailed router setup and configuration.

Adobe: Click here to install Acrobat Reader 6.0.

Panda: Click here to start Panda Anti Virus program.

After USB driver installed, the window below will appear, then press “**OK**” to reboot the computer. After the computer reboot ok, go to step 2) for detail setting.

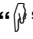


2) Click “**Quick Setup**” to set the router,



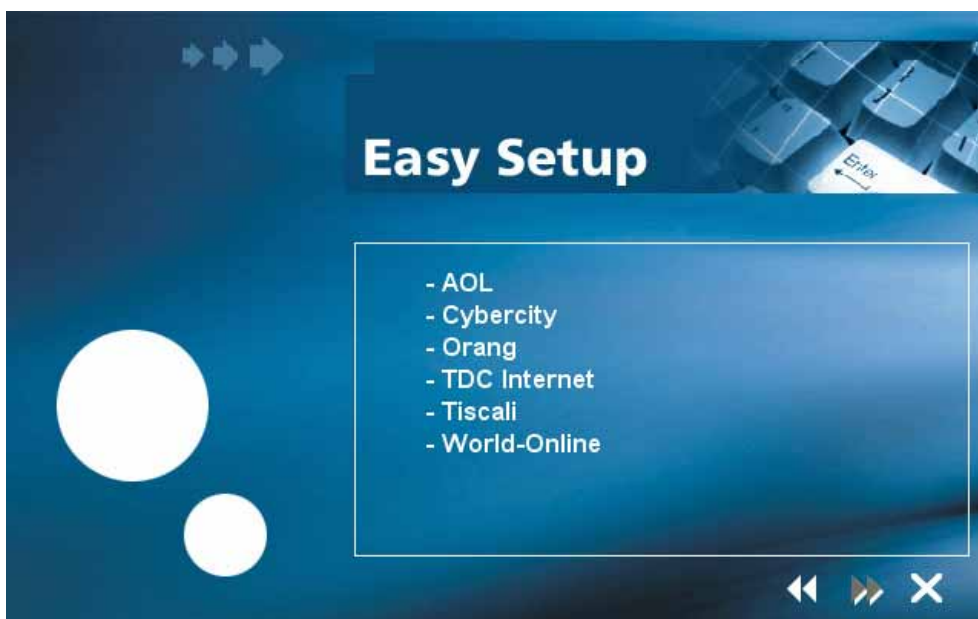
a) Select the country when setup window appears,



b) If your country is not on the list, please click “” to next page and select “**Other**”,



c) After complete country selecting, the window below appears, then select the ISP,



d) After complete ISP selecting, the window below appears and then enter your account “User Name, Password and Password Confirm” then click “▶▶” to next page,

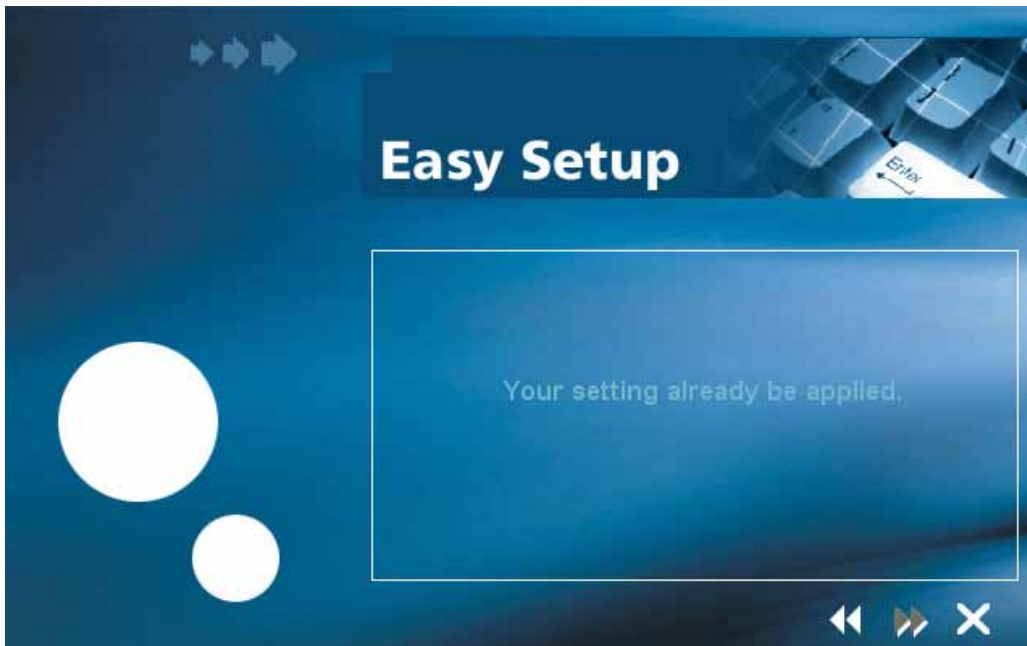


The screenshot shows a blue-themed window titled "Easy Setup" with a sub-header "Install Picture". On the left, there are two white circles of different sizes. The main content area contains three input fields: "User Name(ISP Accou", "Password(ISP Account)", and "Password Confirm". At the bottom right, there are navigation icons: a left arrow, a right arrow (highlighted with a red box), and a close 'X' icon.

e) Confirm router settings and click “▶▶” to next page.



The screenshot shows the same "Easy Setup" window, but the main content area now displays configuration details: "ADSL WILL BE APPLIED FOR - Telecom Italia", "Encapsulation: RCF 2364 PPPOA VC-MUX", "Handshake Protocol: G.dmt", and "VPI: 8 VCI: 35". The navigation icons at the bottom right are the same, with the right arrow icon highlighted by a red box.

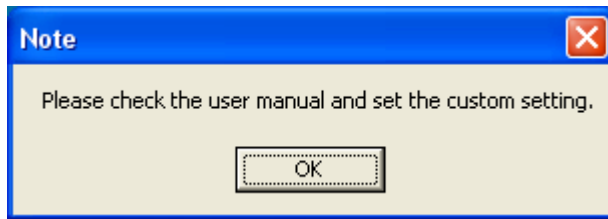


Attention: After you complete all settings, please wait 30 seconds for router reboot automatically.

3) If your country is not on the list, please click “**other**” to go to Router Setup Utility for the detail setting.



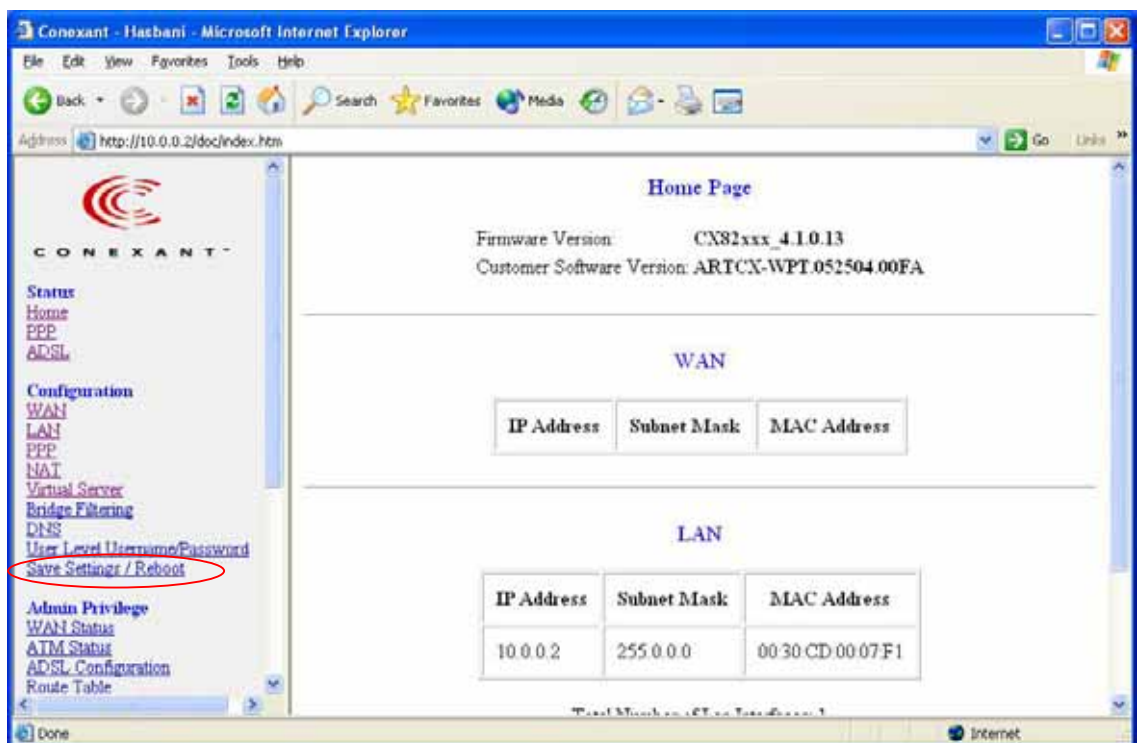
a) After you click “**other**”, then the window below will appear and press “**ok**”



c) When window below appears, enter “**admin**” and password. If you forget your password, you can press “**Default**” on the back panel of the router and hold for 2 seconds to reset router to factory default settings. Default password is “**conexant**”. Then you will be in Conexant Router setup Utility.



d) Please refer to user manual for the detail setting.



- e) Please click “**Submit**” that in the end of this page after you complete every setting.
- f) After you complete all settings, please click “**Save Settings / Reboot**” to save you setting.

Attention: Please wait 30 seconds for router reboot